

JUTASAMA

Head Office:

JUTASAMA SDN. BHD. (95631-H)
Lot 1930 Batu 7, Jalan Bukit Kemuning,
Seksyen 32, 40460 Shah Alam,
Selangor Darul Ehsan, Malaysia.

Coordinate : 3.0'27"N 101.30'54"E
Tel no. : +603 - 5123 0088
Fax no. : +603 - 5123 0077
Email : general@jutasama.com

www.jutasama.com

Overseas Representative Office: Japan

MR. SHUNICHI ABE
#202, 897 Oeda Kasukabe-City,
Saitama-Pref,
Japan 344-0023.

Mobile no. : 81-(0)90-7828-9204
Email : abe.japan@jutasama.com



OHSAS18001:2007
Cert No : 6016680



ISO9001:2008
Cert No : 0403939



'U', 'U2' & 'S'

JUTASAMA



TRUST IN SUSTAINABILITY

A member of Wah Seong Corporation Berhad

Delivering Reliable Solutions

Since our inception in 1983, Jutasama continuously puts the best efforts in improving its working and system processes. Based on a solid foundation, Jutasama has grown to become the preferred plant engineering OEM both locally and globally. Supported by a stable and experienced workforce we are able to extend our expertise to meet our clients' expectations in terms of product, quality, delivery time and price.

Building upon our successful experience, we will endeavour to provide quality products and services to all of our customers. We thank you for your interest in our company and look forward to be your trusted partners.



Our Vision

To be a leading Process Equipment & Energy Solution Provider of choice

Our Mission

To be a sustainable organization through value creation and progressive growth.

To consistently satisfy the needs and reasonable expectation of our clients.

To continually improve and upgrade our working and system processes.

To be the competitive and reliable equipment provider of choice.

To respect nature and not to harm the environment.





About RE Group

Wah Seong Corporation's Renewable Energy Division is a leading process and power generation equipment provider with a strong track record servicing various industries across the world. We are committed to work with our partners to support and develop renewable energy technologies and initiatives as part of the global drive to create a sustainable future through the efficient use of renewable energy sources.

Headquartered in Shah Alam - Malaysia, our integrated manufacturing units are accredited with international quality certifications to complement our promise to provide high quality and competitive products and services. We are also supported by a wide network of regional sales and service offices across key markets to enable us to efficiently meet the needs and demands of our clients and partners.

We are determined to be at the forefront of new trends and future developments. To support this vision, we are currently developing a waterfront fabrication facility around the vicinity of Westport, Klang, Covering a total area of 110,000 m2. This will enhance our strength and capability to cater to the fabrication of heavy equipment and ultimately satisfy our customers' requirements in all aspects. Our range of products and services, make us your one-stop partner for all your process equipment and renewable energy needs.

Jutasama Sdn Bhd

Jutasama Sdn. Bhd. (Jutasama) is engaged in the design, fabrication, installation and commissioning of special tanks, pressure vessels, piping and specialised processing equipment required by the chemical industry, food processing plants and other engineering undertakings. The company is capable of fabricating products in accordance to major international codes or specifications in carbon steel, stainless steel, alloy and clad materials.

Our products and services are as good as the people behind them. Our people are driven by high performance and at the same time, we work hard to ensure that we recruit, train and develop the very best. To meet the growing demands of our existing and new customers, we have made key strategic investments in the latest technology and operate from a 25,000 sq. meter covered factory, well equipped with the latest plant and equipment as well as a

two hectares open yard for storage, backed by designs carried out using the latest computer software. Apart from serving the industry in Malaysia, Jutasama also supplies to international engineering companies which would in turn export to regional countries such as the Middle East, Japan, China, Indonesia, India, Thailand, Singapore, Australia and many more.

Jutasama is an accredited ASME "S", "U" & "U2", ISO9001:2008 and OHSAS18001:2007 certification.

Mackenzie Industries Sdn. Bhd.

Mackenzie Industries Sdn. Bhd. (M) is engaged in the design, engineering and construction of boiler and energy system. The company is operated by a team of boiler engineers with more than 30 years' experience in the field.

MI is capable of design and engineered various industrial boiler energy systems, particular in the Biomass Fired Power Plant and Waste Heat Fired Boiler (HRSG).

MI's steam boiler is also used in palm oil industry, wood industry, food processing plant & etc

PMT Industries Sdn. Bhd.

PMT has a strong local & regional after-sales service team which can provide overhaul and servicing of steam turbines, generators and other rotating equipment.

PMT Industries S/B is the sole agent of SHINKO steam turbine from Japan. SHINKO steam turbine is the market leader in the ASEAN region especially for the Agro-Engineering Industry with a range of up to 40MW capacity.

The Integrated facility located in Shah Alam, Malaysia provides wide range of services, in which includes:-

- Precision balancing
- System alignment
- Thermal spray & erosion control
- Machining & milling of parts

PMT also supply the equipment, specialized parts & components for palm oil & agro – based industry with worldwide distribution network. As a long established player in the market, PMT provides project management & consultancy services. Accredited with ISO9001:2008 certification which operate from a fully equipped facilities in Malaysia and Indonesia.

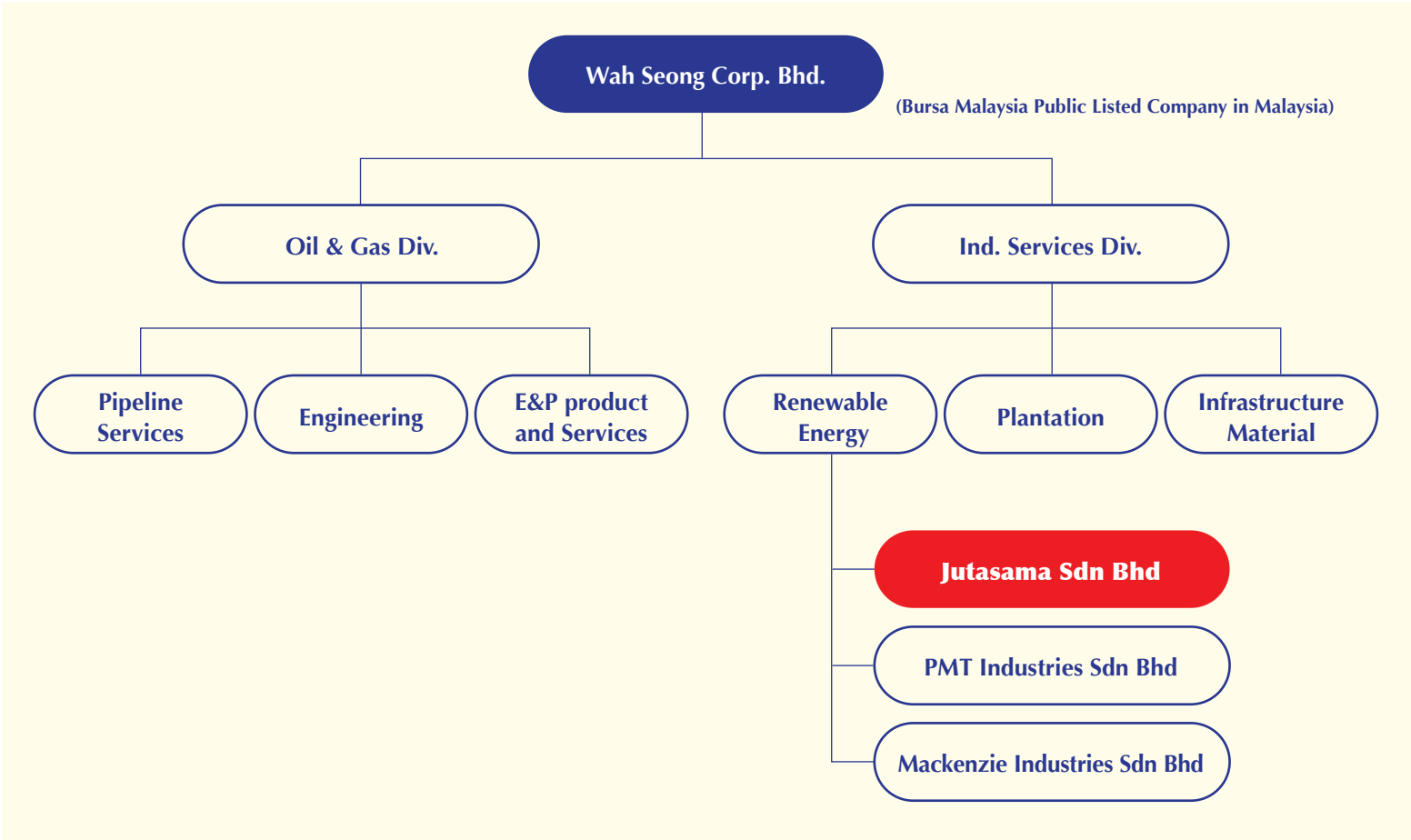


Parent company - Wah Seong Corporation Berhad

Founded in 1994, Wah Seong Corporation Berhad ("WSC" or "the Group") has grown from strength to strength, transforming itself from a medium-sized Malaysian enterprise into an international oil and gas and industrial services conglomerate. Propelled by the dynamic pace of the energy sector and rising demand, the Group continues to build upon its success to effectively meet the needs of both the oil and gas as well as non-oil and gas sectors as a globally integrated infrastructure group. Listed on the Main Market of Bursa Malaysia Securities Berhad, WSC has established its footprints in more than 14 countries worldwide – a feat made possible as a result of its vast technical experience and proven track record. As a rising global player, WSC is committed to achieving success in a holistic manner whereby its economic ambitions are balanced out with its societal and environmental obligations.



Corporate Structure

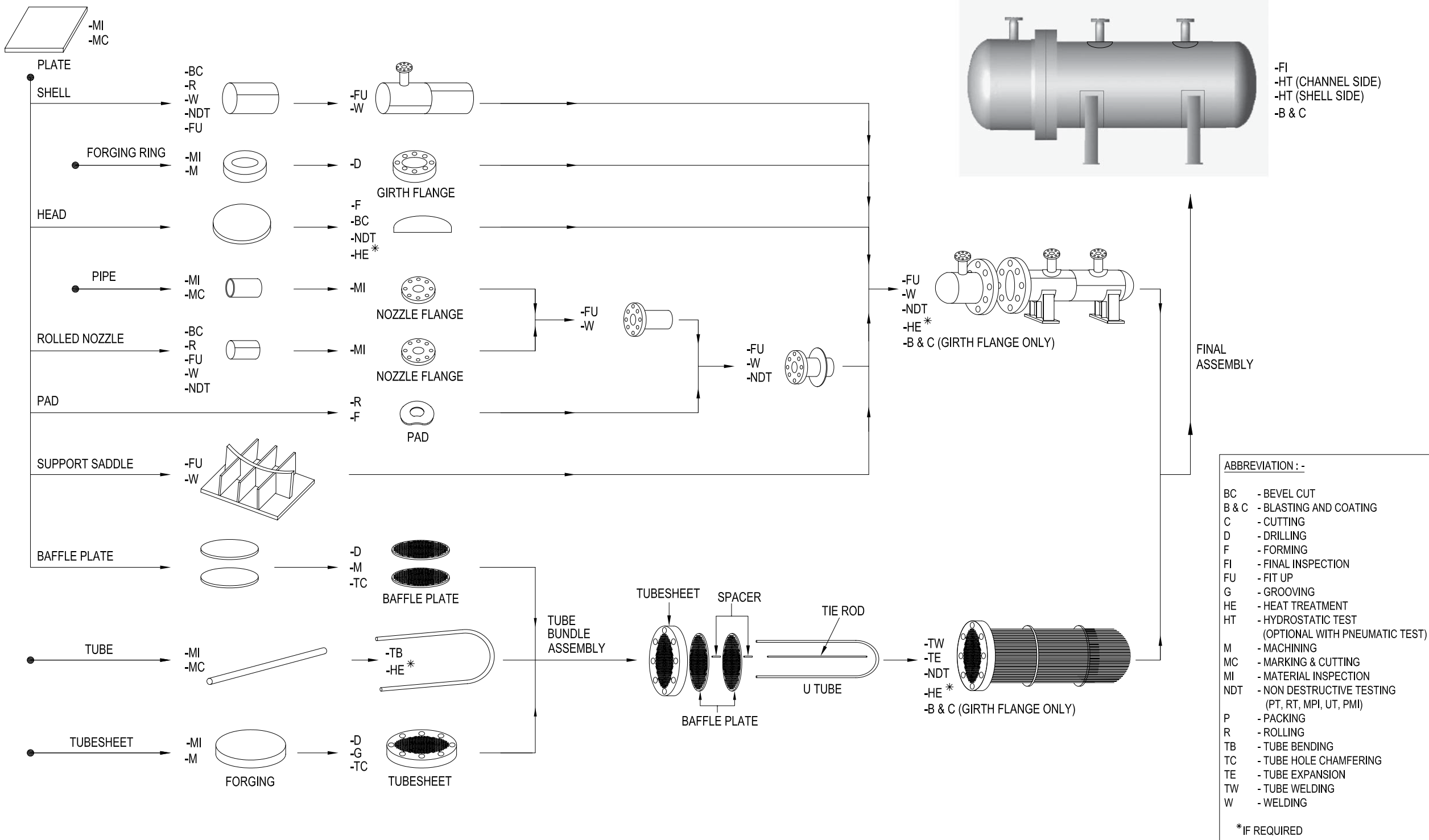


Business Fields

Product & Solutions

- Columns
- Drums
- Shell & Tube Exchangers
- Air Coolers
- HRSG & Boilers
- Modular Skid
- Tanks / Silos
- Mixing Vessels
- Piping Works

TYPICAL FABRICATION FLOW CHART (FOR S&T HEX)



Facilities & Equipment



Thick Wall Plate Rolling Machine



Water Front Facility (110,000m²)



Blasting Shop



120thk SS CNC Plasma Cutting Machine



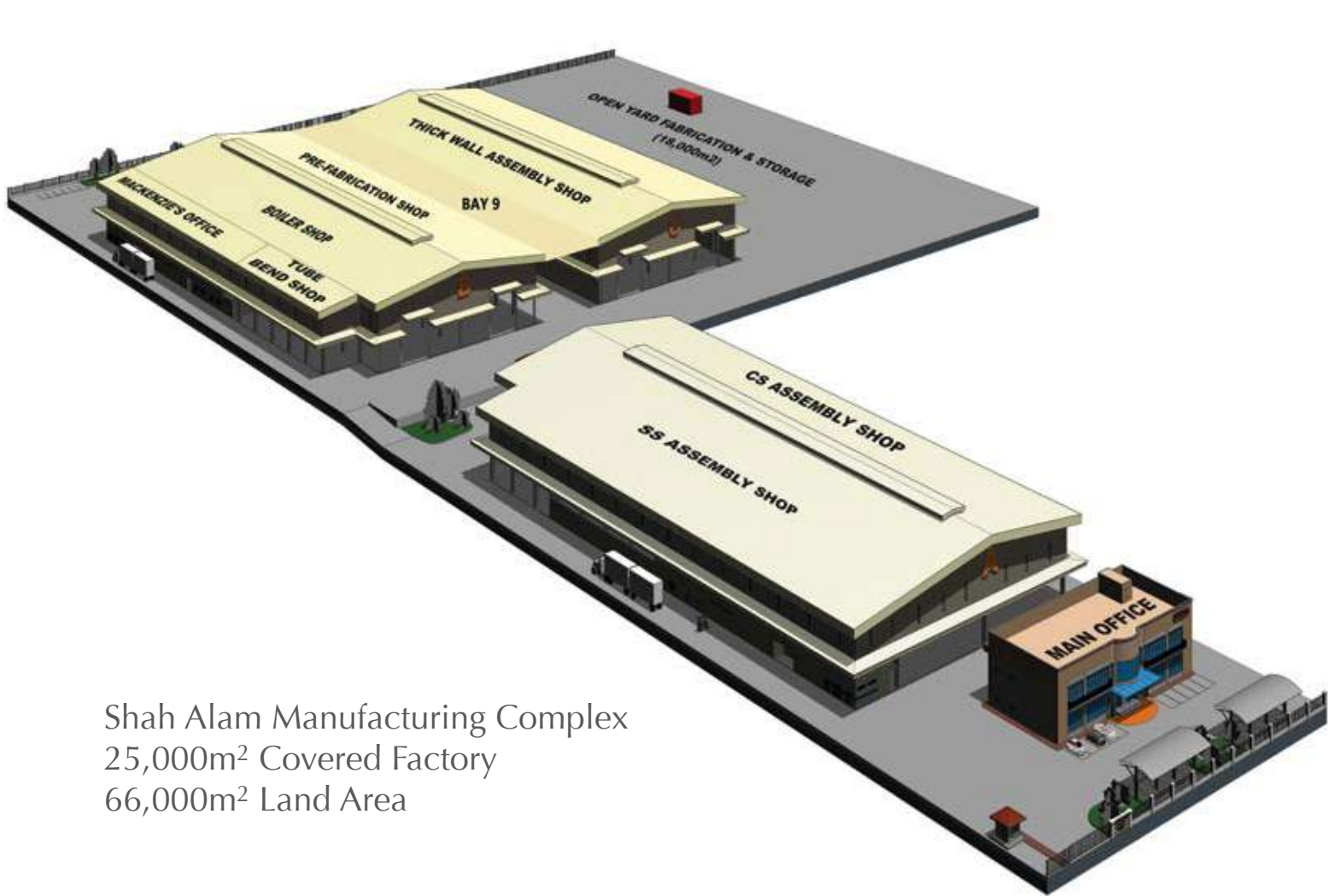
PMI



Nozzle Overlay Machine



Circle Cutting Machine



Shah Alam Manufacturing Complex
25,000m² Covered Factory
66,000m² Land Area



Pipe Bender With Booster



300 Ton Turning Rotator



Plasma Keyhole Arc Welding Machine



Portable Bevellers For Maximum Mobility

Design & Engineering Software

Design Capability

Shell & Tube Heat Exchanger Process Sizing:
HTRI Xist

Design for pressure vessels (ASME, EN & PD5500):
PVElite & Codecal

Finite Element Analysis for bellows & nozzles/saddles:
Flanged & Flued and Nozzle-Pro

Pipe Stress Analysis software:
CAESAR II

Plant Design & Automatic Isometrics:
CADWorx-plant

Structural Analysis software:
StaadPro

Structural Connection Analysis:
RAM Connection

3D & 2D Drafting software:
Inventor 2014 & Autocad 2014

Quality, Safety and Health Certificate



National Board of USA for
Pressure Vessel
Since 1999



R-Certificate,
Cert No.R-7474



DOSH Certificate
BT 21/166



ISO9001:2008
Cert No. 0403939



OHSAS18001:2007
Cert No 6016680



Manufacture License
of Special Equipment,
Cert No. TS2200757



S-certificate,
Cert No. 31098



U-certificate,
Cert No.31099



U2-Certificate,
Cert No.33317

Process Equipment for Chemical Industry



5,400ID X 13,000L & 4,400ID X 44,000 L SS Columns Delivered to Port Klang



6.5ID Storage Tank



Column - 58m Length - AEC



2,500ID Heat Exchanger With 3,952 Nos x 27.20D Tube



Recycle Solvent Accumulator - 5500ID (138 tons)



High Pressure Blowdown Vessel 4000ID wt TSA Coating

Process Equipment for Oil & Gas Industry



Vertical WHRU with 355 P11 Heating Coil - P249 Sakhlil Project



Hydrocyclone Skid



Incinerator (SHDS) c/w Refractory



4 Nos Duplex UNS31803 Tube Bundle for Petronas Angsi Offshore Project



Hp Separator 140mm thk SS316L clad



8mID (630 tons) LPG Bullet Tank



Gas Chiller for Petronas Turkmenistan OGT Project



Glycol Contactor Tower 145mm thk SS316L Clad



Thermal Reactor & Steam Drum (SHDS c/w Refractory) - JGC



Gas Compression Skid

Process Equipment for Oleo-chemical



Long Column Using Booster Hydraulic Trailer



Hydrogeneration Reactor - 4mID x 85mm thk



Monel 400 Column With 6 Heating Leg



Hydrogeneration Interchanger - 4028nos of tube



Esterification Column - Total Length 42m



904L Column



SS317L Cladded Splitting Column



Final Heater



Site Installation of Columns & HEXs

Process Equipment for Petrochemical



TSK - Thermal Oxidiser



Headers With Stub



PSA Skid - 12 bed



6 meter ID Shell Sections CW Petal Head



PSA Absorber (12nos) - 2m ID - UOP
Takeer Project - Abu Dhabi



Thermal Oxidiser



Methanol Drum

Process Equipment for Power Generation



Process Equipment for Other Industries



Clientele

				
 MITSUBISHI HEAVY INDUSTRIES, LTD MITSUBISHI KAKOKI KASHI, LTD MITSUBISHI CHEMICAL ENGINEERING CORPORATION				
		 Innovation by Chemistry		
				
				
 SUMITOMO CHEMICAL ENGINEERING CO. LTD. SUMITOMO CHEMICAL ENGINEERING SINGAPORE PTE. LTD.				
				